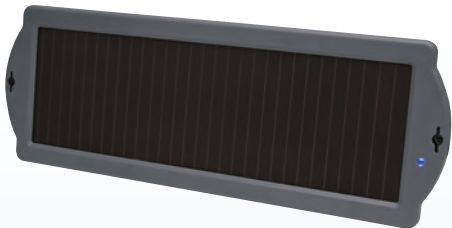


The 12V Battery Charging Kit utilises the Amorphous solar cell and is perfect for trickle charging and lessening the potential for a flat battery being caused by the power drain of radio memories, alarms, computers & clocks.

Connecting the Charger Kit to a battery is as easy as connecting to either the cigarette lighter plug or if this is not available then directly to the battery terminals.

Housed in a durable ABS plastic frame and featuring a flashing indicator to confirm when power is being generated these kits are equipped with a control unit that will not allow the charge to flow back from the battery to the solar cells.

1.5 WATT 12 VOLT BATTERY CHARGER KIT



SPECIFICATIONS

522015

Cell Type: Amorphous

Output Power: 1.5Watt (max)

Size: 370(L) x 160(W)

Working Voltage VOP(V): 13-15

Working Current LOP(A): 115MA

Weight: